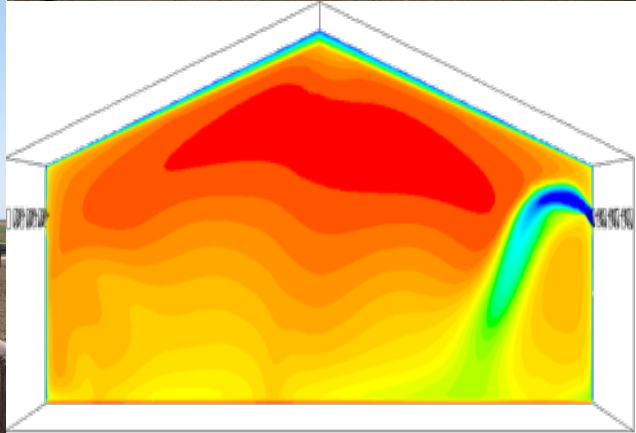


10th INTERNATIONAL LIVESTOCK ENVIRONMENT SYMPOSIUM (ILES X)

WITH

1st U.S. PRECISION
LIVESTOCK FARMING
SYMPOSIUM



Omaha, Nebraska, USA

September 25-27th, 2018

<http://www.asabe.org/ilesx2018>

YOU'RE INVITED

We are pleased to invite you to participate in ASABE's 10th International Livestock Environment Symposium (ILES X) with the 1st US Precision Livestock Farming Symposium in Omaha, Nebraska, USA on September 25-27th, 2018.

ASABE ILES X's goal is to provide attendees opportunities to exchange their research discoveries and to foster enhanced worldwide networking among engineers, animal scientists, veterinarians, ethologists, and other professionals who are interested in animal-environment interactions and technologies.

The Symposium theme "Sustainable animal production: environment, welfare, regulations, and farmer profitability" will focus on providing for individual animal needs while address the challenges in environmental control, air quality and well-being.

The Symposium will run over 3 days including oral and poster sessions and a half day technical tour.

Registration will be done via the ASABE website. On the website, you will find more information about the conference, registration and abstracts submission form. (<http://www.asabe.org/ilesx2018>).

DEADLINES

October 20, 2017: Submission of abstracts

November 30, 2017: Notification of acceptance

May 1, 2018: Submission of full papers

August 1, 2018: Edits to Papers-Final program

TOPICS

Air Quality - Measurement and Abatement of Aerial Pollutants

- Ammonia
- Greenhouse Gas
- Particulate Matter

Animal Responses to Environment

- Temperature,
- Lighting,
- Air Velocity,
- Enrichment,
- Etc...

Precision Livestock Farming

- Instrumentation
- Modeling
- Applications

Types of studies desired include field measurements/ assessments, modelling, optimization, and product development/testing

FOR MORE INFORMATION

Morgan Hayes

212 C.E. Barnhart Building
University of Kentucky
Lexington, KY 40506-0276
hayesmorgan@uky.edu
610-393-7106

Tami Brown-Brandl

USDA-ARS-MARC
Clay Center, NE 68933
Tami.BrownBrandl@ars.usda.gov
402-762-4279