



International  
Society for  
**Applied  
Ethology**

# Newsletter

Issue 65 • 2024 December



## Contents

President’s Piece .....	3
Updates from your ISAE Council .....	5
Council Position Vacancies.....	5
Communications .....	5
Editors .....	7
Students .....	7
Membership.....	9
Finances .....	9
2024 Awards .....	11
Congress News .....	15
57 <sup>th</sup> ISAE Congress – Curitiba, Brazil Report .....	15
2024 Congress Travel Survey Summary .....	16
58 <sup>th</sup> Congress – Utrecht, The Netherlands.....	17
Future Congresses – 2026 and beyond.....	18
Congress Attendance Fund (CAF) .....	18
EDIA Committee Update.....	18
Regional News and Development.....	19
Development.....	19
Benelux .....	21
East Asia .....	22
Oceania .....	22
South and Central Asia.....	22
Southwest Europe.....	24
UK and Ireland.....	25
USA and Canada.....	25
Other News .....	25
Animal Welfare Judging and Assessment Contest.....	25
AAALAC Update.....	25
Employment and Education Opportunities .....	26
Contact Information.....	27

## President's Piece

Dear ISAE Members,

It is time to say goodbye to 2024 and hello to 2025. Many changes are afoot in the world, but some things remain constant. ISAE continues to be home to incredible researchers, to support colleagues in developing countries and to host conferences showcasing research in applied ethology for a range of species in a myriad of contexts.

ISAE hosted another stimulating and inspiring congress as we returned to Brazil in 2024. This conference was marked by wonderful winter weather in Curitiba, amazing local hosts—including a fantastic student crew, capybaras, and keynotes and plenary talks that truly inspired. Workshops on reviewing ethical use of mythical creatures in scientific studies, street vendors at the conference, the beautiful gala dinner and wonderful music at the Ópera Arte Restaurant, and the farms and veterinary hospital at Fazenda Gralha Azul completed a wonderful congress experience. I am pleased to report that our efforts related to improving Equity, Diversity, Inclusion and Accessibility (EDIA) were successful at the 2024 congress, thanks in large part to a fantastic set of allies who were attentive to their colleagues. Suggestions given by attendees to continue to make the congress accessible and enjoyable for all were noted and are being thoughtfully considered for future congresses (such as having a sensory room to provide a space to attendees who need a break from the sometimes overwhelming stimuli of a conference). I'd like to give a special thank you to Ruan Daros for leading the organization of this amazing conference! Please be sure to read SVP Mark Rutter's article with more details. I look forward now to heading to Utrecht in 2025, where I have every confidence that Bas Rodenburg and his team will continue our tradition of stimulating, inclusive, and enjoyable conferences. Keep reading for more information about the 2025 congress in Utrecht from the organizing committee.

In other notable news this past year, Janice Swanson was made an ISAE honorary fellow, becoming the 30th ethologist to be given this recognition. Recently retired, from Michigan State University where she served as director of animal welfare, with a joint appointment in Animal Science and Large Animal Clinical Sciences, Janice has always been service minded. Her early work helping establish the United States Department of Agriculture Animal Welfare Information Center provided fundamental science-based resources that informed animal caretakers and policy makers. Over a 15-year period from 1994-2011, Dr. Swanson served the ISAE as regional secretary, council secretary and as our president. She also served in the role of department chair at Kansas State and Michigan State, and I, personally, benefited from her leadership, support, and dedication to such a truly Herculean task. Her impactful research has ranged from low-stress handling of beef cattle to comparing impacts of housing on laying hens to impacts of adaptive pasture management on cattle welfare, with work on species ranging from camelids to donkeys to laboratory animals to turkeys, all forming part of her impactful contribution to ethology, welfare, policies and standards.

Sarah Adcock received the 2024 New Investigator Award for her research on pain of calves and sheep that combines traditional metrics with use of technology to gather information. Her forward-thinking work

examining the behavior and welfare of black soldier fly larvae will help set standards for responsible use of insects as feed for other animals. Sarah has also received awards for her outstanding mentorship of students and has been successful in securing funding for her work and in seeing it through to publication. This year we also recognized Nina von Keyserlingk with the ISAE Creativity Award. Nina has authored or co-authored more than 330 peer-reviewed publications, which have been cited over 30,000 times, and so it is not surprising that she is ranked 24th globally for Best Animal Science and Veterinary Scientist (Research.com). Working with an incredible team of collaborators, including both faculty colleagues and students, Dr. von Keyserlingk bridges fields of applied ethology, animal welfare, and social science and is able to convey scientific concepts to diverse audiences. Her research provided the first evidence linking the social environment to illness in farm animals, and she has helped transform traditional approaches to understanding feeding behaviour of dairy cattle through asking questions about when cattle eat, rather than just what and how much they eat. To help translate her science into practice, Nina uses social science methodologies to understand attitudes of the public, farmers, and professionals to identify needs and possibilities for changing on farm practices.

Under the leadership of Maria Camilla Ceballos (Development Officer 2020-2024) and Jen-Yun Chou (Assistant Development Officer 2020-2024), another grant was received from Open Philanthropy to continue to support our Developing Countries Congress Attendance fund and the activity of country liaisons. This funding has been instrumental in funding the in-person attendance of DCCAF members at annual Congresses, including our 14 awardees this year from 3 continents (South America, Africa, and Asia). Their presence, conversations, and presentation of their own work enrich our perspective and our vitality as an international society. Thank you, Maria and Jen, for your dedication to these grants and our development work!

In that vein, I would like to welcome newly elected Development Officer Oluwaseun Iyasere and current Assistant Development Officer Samuel Durosaro, to the ISAE council along with Ophélie Menant to the communications officer role. And, last but not least, I would like to thank outgoing communications officer Christian Nawroth for his truly wonderful work on behalf of ISAE's webpage, including our vital and well-used employment opportunities section. Thank you, for your service to ISAE, it has been a pleasure serving with you on council.

Finally, I wanted to let you know I appreciate your patience as we work with you to update our membership database following the updates to our website and membership platform. I've personally been experiencing (and helping sort out glitches) as I've tried to update my own contact information and helped regional and membership secretaries sort out where proofs of payment have gone and why certain membership features aren't working as intended. I am crossing my fingers that it will finally get sorted in the coming year.

**Janice Siegford / *President of the ISAE (2023-2025)***

## Updates from your ISAE Council

### Council Position Vacancies

In 2025, three council positions will be open. Please read the descriptions of the positions below and consider submitting an application.

1. **Junior Vice President.** The Junior Vice President coordinates regional activities including communicating with Regional Secretaries, organizing gatherings at annual congresses, reporting regional activities at Council Meetings, and working with the treasurer to allocate regional funds. The Junior Vice President also assumes the duties of the President if absent or unable to serve. The Junior Vice President serves a 2-year term. After 2 years, the Junior Vice President will be voted to move up to the role of President for 2 years, then Senior Vice President for 2 years.
2. **Secretary.** The Secretary's duties include arranging ISAE Council and business meetings, recording meeting minutes and compiling the ISAE newsletters, among other duties. The Secretary typically serves a 4-year term.
3. **Junior Editor.** The main responsibilities of the Junior Editor include assisting the Senior Editor with the annual special issue of *Applied Animal Behaviour Science* and helps to coordinate the Help-with-English scheme. The Junior Editor usually serves a 2-year term. After 2 years, the Junior Editor will be voted to move up to the role of Senior Editor for a 2-year term.

If you are interested in serving on the ISAE council, please submit your application materials to Carly ([comalley15@gmail.com](mailto:comalley15@gmail.com)), including 1) a paragraph outlining your interest in the position and relevant skills, and 2) your 2-page CV to be shared with ISAE Members.

**Carly O'Malley / Secretary of the ISAE (2021-2025)**

### Communications

**Communications Officer Transfer.** We would like to wish Dr. Christian Nawroth a whole-hearted thank you for his efforts as ISAE Communications officers. Your new Communications Officer is Dr. Ophélie Menant who works as a Postdoc at the Teagasc, Ireland.

**Development Officer Transfer.** We would also like to extend our heartfelt gratitude to Dr. Maria Camila Ceballos for her dedicated efforts as ISAE Development Officer. Your new Development Officer is Dr. Oluwaseun Serah Iyasere who works as an associate professor at Federal University of Agriculture, Nigeria.

**ISAE Resources for Researchers.** We would love to see the resources page on our [webpage](#) grow – please drop us an email with tools that prove to be helpful to organize your projects, software that you use for data analysis, and Open Science resources that you would like to share.



**Applying Ethology Webinars.** We are continuing to maintain the *Applying Ethology Webinars* on the **Animal Welfare Slack Workspace**. Since our launch in 2020, more than 60 (most often early career) scientists have shared their research (check out our YouTube channel - link below).

If you would like to give a presentation, please fill out this form: <https://tinyurl.com/applyingethologyspeaker>

The **Animal Welfare Slack Workspace** has grown to more than 1000 members! On the workspace you have access to our *Applying Ethology Webinars*, job postings, recent papers, and methodology questions. The Slack space is open to everyone, regardless of ISAE affiliation. Please email Christian Nawroth to gain admittance ([nawroth.christian@gmail.com](mailto:nawroth.christian@gmail.com)).

Once you join the **Animal Welfare Slack Workspace**, please join the channels (such as #conference or #jobs) you find interesting.

For your convenience:

- Calendar of upcoming talks: <https://tinyurl.com/applyingethologycalendar>
- Speaker list and instructions: <https://tinyurl.com/applyingethologywebinar>
- YouTube channel: <https://www.youtube.com/channel/UCe6fHV211isHwiSgGV5OLgw>

**Share Your News!** If you have job or graduate student positions to advertise, conferences/webinars/courses upcoming, ethology news items, survey requests, or open-access papers or books, or temporary free-access author links to share, please send the details to [info@applied-ethology.org](mailto:info@applied-ethology.org). Include a photo of your study species or test design for Open Access articles, if possible. We also encourage you to send us short videos, gifs or visual abstracts of your work. If you have an **X/Twitter** account, include your handle so we can tag you! Please be aware that all news items - including job positions - may have up to a 1-2-week delay in posting to social media so send them well in advance of position close.

**Follow Us on Social Media!** To get the latest ISAE news, please also follow us on our [Twitter](#) and [Facebook](#) accounts!

We look forward to interacting with you online and hope to someday see you in person again in the future!

**Ophélie Menant** / *Communications Officer of the ISAE (2024-2028)*  
**Maria V. Rørvang** / *Assistant Communications Officer of the ISAE (2022-2026)*

## Editors

**Special issues.** Preparations for the 2024 Special Issue of the ISAE international congress are now underway. We've already received many exciting manuscripts and expect to receive several more over the next few weeks. This issue will focus on the theme of the ISAE congress held in Brazil: *Animals and Society: Striking the right balance through Ethology*. We're looking forward to unveiling the papers as they are published in the Applied Animal Behaviour Science journal. For this issue, we are grateful to be joined by guest editors Dr Ruan Daros, Dr Andreia de Paula Vieira, and Dr Thiago Bernardino.

Past ISAE Special Issues, including our most recent issue on '*One Ethology*' can be found together online where all AABS special issues are listed.

<https://www.journals.elsevier.com/applied-animal-behaviour-science/special-issues>.

Queries can be directed to Dr Kris Descovich at [k.descovich1@uq.edu.au](mailto:k.descovich1@uq.edu.au).

## ISAE English Proofreading Service

ISAE has an English grammar and language editing service to help members prepare manuscripts for publication in *Applied Animal Behaviour Science* and other English-language journals. If you are an ISAE member interested in serving as a volunteer for this program, please contact **Dr. Peta Taylor** at [peta.taylor@unimelb.edu.au](mailto:peta.taylor@unimelb.edu.au).

For more information, or to request for manuscript editing please see the following [ISAE webpage](#)

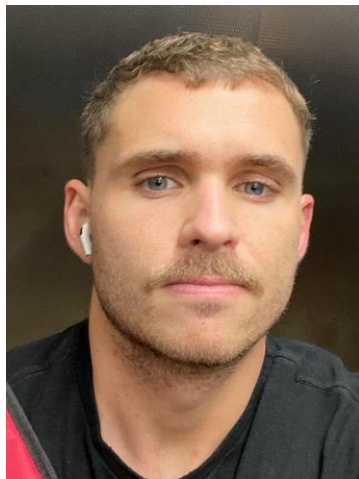
**Kris Descovich and Peta Taylor /**  
*Senior and Junior Editors of the ISAE (2023-2025)*

## Students

### Farewell from Bianca

I feel privileged to have had the opportunity to be part of the ISAE family over the past two years. Serving as an ISAE Student Representative allowed me to meet incredible people and promote networking experiences that helped students make the most of ISAE congresses. I want to express my heartfelt thanks to everyone on the ISAE Council for welcoming me so warmly. I am truly proud of the work we have accomplished together. It was also a pleasure to collaborate with two exceptional Student Representatives—Saskia during my first year and Mostafa during my second year. Working with you both made this journey even more enjoyable. I wish Victor, the new ISAE Student Representative, all the best in the years ahead. I am excited to see the fantastic contributions you and Mostafa will bring to the ISAE student community!

## Welcome Victor! ISAE Student Representative 2025-2026



We would like to thank the outstanding candidates who applied to serve as the next Student Representative, as well as to everyone who participated in the voting process.

Please join us in warmly welcoming **Victor Brusin**, who has been elected as the new ISAE Student Representative for the 2025–2026 term!

Victor is a Ph.D. student at the University of Calgary, Canada, and a valued member of the Animal Welfare Group led by Dr. Maria Ceballos. His journey in animal welfare research began in 2016 with the ETCO Group, under the guidance of Dr. Mateus Paranhos in Brazil. Currently, Victor's research explores the key factors, motivations, and challenges influencing the adoption and implementation of immunocastration in swine production systems across Brazil, Colombia, and Canada. By employing qualitative methods, his work aims to provide critical insights into this innovative practice.

We are confident that Victor will be an exceptional addition to the ISAE Council. Welcome, Victor!

On behalf of the ISAE student members, I, Mostafa, would like to sincerely thank Bianca for her outstanding contributions to the ISAE society during her term. It has been an absolute pleasure working with you and learning from your experience. Our meetings were always enjoyable and productive, and you consistently ensured I had the support I needed to grow within the society. Your dedication and commitment to ISAE are truly inspiring.

Thank you for your guidance and unwavering support. I look forward to the chance to meet you in Utrecht!

## 57th ISAE Congress

The 57th ISAE Congress in Curitiba, Brazil, was a fantastic opportunity to reconnect with everyone! We were thrilled to see excellent student participation in the planned activities.

On the first day, students joined the *Meet & Greet* event, where approximately 60 students received Bingo cards featuring questions about their peers. This activity created a fun and interactive way for students to connect and spark conversations. On the second day, we organized *Eating with Ethologists*, where students had lunch with scientists they admire and want to learn from. A total of 36 scientists volunteered, and 40 students were matched with 19 scientists. We deeply appreciate the scientists who generously gave their time for this enriching experience. To wrap up the student activities, we organized *Table Topics* on the third day. Lunch tables were themed around 10 different topics in applied ethology and animal welfare, providing an excellent platform for attendees to meet, exchange ideas, and discuss their research.

We hope everyone enjoyed their time in Curitiba as much as we did. We can't wait to see you all again next year in the Netherlands!

**Bianca Vandresen and Mostafa Farghal /**  
*Student Representatives of the ISAE (2022-2024; 2024-2026)*



## Membership

Currently, there are 616 members. 63.3% (390) active members and 36.7% (226) inactive members. Among the 390 active members, there are 16 honorable members. Some members are facing technical issues with renewing their membership, and the ISAE council is working to find solutions to these issues.

**Abdelkareem Abdallah / Membership Secretary of the ISAE (2022-2026)**

## Finances

### Treasurer's End of Year Report

The report contains the end of year summary for the period **January 1<sup>st</sup> to December 14<sup>th</sup> 2024**.

The table is the edited output generated from the Xero accountancy software that ISAE now subscribes to via our accountants (Henderson-Loggie). It reports the revenue and expenses in all 3 HSBC bank accounts (deposit, current and Euro) and our new WISE account to manage the Open Philanthropy (OP) grant. The report is in GBP after having reconciled the Euro and USD transactions (see 'Bank revaluations' line). The table has adjusted income and expenditure and compares with the annual report for 2023. Please note that the new WISE accounts are integrated into the reporting but where funds have had to move between ISAE HSBC (GBP) and WISE (USD) accounts there are some issues with reconciliation and some bank fees still apply – hence the discrepancy in the Table.

**INCOME:** The accounts are healthy. Our income from membership subscriptions is steady (£16,720). The main revenue is from **Scholarship funds from sponsors** (£154,736). This includes the first payment of the new **Open Philanthropy (OP) grant** (2023-2026 – Part 1 £106,172) from Good Ventures to support the DCCAF scholars and other OP activity. These funds were previously held and managed by the US region of ISAE. This responsibility has now been transferred to the main ISAE account. We also received the remaining funds from the previous OP award (2020-2023 - £26,227) to pay any remaining scholarships and repay ISAE for DCCAF scholarships and OP activities paid out in 2023 from the main account. Other sponsorship includes the **Purina award** (£11,508) and the **HSI award** (£6301) funding scholarships for attendance and events at the 2024 Congress. The accounts also realised income from exhibitors at the ISAE2024 Congress (Charles River (£2943) and CAB International (£1505)). This offset pre-payment to Congress organisers for Brazil ISAE2024 (see Expenditure line in Table).

**EXPENDITURE:** The majority of our expenditure (£81,018) has involved various **charitable activities** including remaining scholarship payments from 2023, as well as support of 2024 regional meetings (£5,231) and 2024 OP scholarships (i.e. the DCCAF award). We also had outstanding payments to the Congress management system ExOrdo from 2023 and have paid this year's invoice (total £11,224). Our bank charges remain high due to international transfer fees but our WISE account should help with the OP payments, particularly if recipients have WISE accounts. Other expenditure includes our usual payments to Opayo and Intergage for their membership services. Higher payments have been made to Intergage as they completed upgrades to our website. There have been a number of reimbursement to council members for costs incurred for paying for web-hosting programmes requiring credit card payments and set-up costs for the WISE account.

Our 2023 accounts were inspected by our accountants and submitted to the Office of the Scottish Charity Regulator (OSCR).

## ISAE Accounts for period Jan 1<sup>st</sup> to December 14<sup>th</sup> 2024 (compared with 2023 year-end accounts)

### Profit and Loss

International Society For Applied Ethology  
For the year ended 31 December 2024

<b>Account</b>	<b>2024 (Jan 1st to Dec 14th)</b>	<b>2023 (Jan 1st to Dec 31st)</b>
<b>Revenue</b>		
Interest Income	1,702	1,039
Other Revenue	82	0
Scholarship Funds From Sponsors	154,736	93,605
Subscription income	16,720	14,501
<i>Other 'Income'</i>		
Refunded bank fees	13	0
Scholarship return	3,157	4,918
Congress income	420	0
Transfer in from ISAE WISE account	25,373	0
<b>Total Revenue</b>	<b>202,202</b>	<b>114,063</b>
<b>Expenditure</b>		
<b>Charitable activities</b>		
Grants & Donations	21,363	55,252
OP activity (includes DCCAF scholarships)	50,424	6,398
Congress organisers	4,000	27,104
Regional payments	5,231	0
<b>Total Charitable activities</b>	<b>81,018</b>	<b>88,754</b>
<b>Gross Profit</b>	<b>121,184</b>	<b>25,309</b>
<b>Administrative Costs</b>		
Audit & Accountancy fees	2,891	1,800
Bank Fees	2,552	2,983
Bank Revaluations	2,627	1,289
Conference management system	11,224	764
Council members' costs	292	1,608
Elsevier	452	337
General Expenses	0	117
Membership services - Intergage	6,392	1,608
Membership subscription refund	80	0
Platform Charges - OPAYO/ Sagepay	423	509
Transfer out to ISAE WISE account	25,304	0
<b>Total Administrative Costs</b>	<b>52,235</b>	<b>11,016</b>
<b>Operating Profit (Gross Profit-Operating Costs)</b>	<b>68,948</b>	<b>14,293</b>

Emma Baxter / Treasurer of the ISAE (2017-2024)

## 2024 Awards

I want to extend a huge thank you to everyone who took the time to nominate exceptional individuals for the Creativity and New Investigator awards. Your commitment to recognizing deserving individuals within our community is truly appreciated. I also want to express gratitude to the members of our award committees who volunteered their time and expertise to provide valuable feedback on the nominees. ISAE members that are interested in serving on the 2025 Awards Committee should reach out to me at [wurtzkai@gmail.com](mailto:wurtzkai@gmail.com). Participation is greatly appreciated and ensures the continued success of the ISAE Awards.

This year, the winners of both awards were presented at the 57<sup>th</sup> Congress of the ISAE in Curitiba, Brazil. For those that were unable to attend, let me introduce you to the 2024 ISAE Award winners:

### Dr Janice Swanson received ISAE Honorary Fellowship in 2024



Throughout her career, Janice has made significant contributions to the field of applied ethology through her research, teaching, mentorship of faculty and students, and, most notably, service to the community to advance change in animal welfare policy in the United States. We, the nominators, represent individuals that have worked alongside her in these efforts (T. Widowski), have been mentored by her as a graduate student (M. Erasmus) and early career faculty (J. Jacobs), and we believe Janice fully embodies the mission of the Society and the spirit of this award. The ISAE advances applied animal behavior science and inspires innovation through research and education to inform best practices for management and human-animal interaction, ultimately to better the lives of animals. Janice's lifetime research and teaching epitomizes the ISAE's mission. Recent work has focused on laying hen behavior, including investigating causes for and solutions to feather pecking behavior, and the importance of dustbathing behavior in non-cage systems. Along with Drs. Joy Mench and Janice Siegford, Janice led a multi-institutional project as part of the Coalition of Sustainable Egg Supply to comprehensively assess the animal welfare, farm

worker health and economic implications of different laying hen housing systems within the context of the USA. This work was instrumental in providing important guidance and best practice advice to the laying hen industry in the US in advance of the current transition of 100s of millions of laying hens to non-cage systems. Her earliest and most recent work focused on beef cattle with investigations related to low-stress handling, sustainability, and adaptive pasture management. Janice's impact extends to other species, with projects addressing the behavior and welfare of horses, donkeys, camelids and laboratory animals. Throughout her research career Janice effectively translated ethology research to application in terms of standards for housing human-animal interaction and animal management. Many of her 50+ peer-reviewed manuscripts and book chapters focus on animal welfare policy, legislation and ethics. Numerous

additional technical publications set policies relating to animal welfare, such as the 2018 Council for Agricultural Science and Technology Task Force Report and the Federation of Animal Science Societies Guide for the Care and Use of Agricultural Animals in Research and Teaching (the Ag Guide). The Ag Guide is used by all institutional animal care and use committees at US universities and other organizations, influencing the care and welfare of millions of animals across the US.

Janice began her career as technical information specialist for the United States Department of Agriculture Animal Welfare Information Center. This was one of the earliest formal government establishments to address animal welfare issues in the United States. In that role, Janice authored dozens of scientific reviews and bibliographies on a variety of topics related to farm and laboratory animal welfare and legislation, which were used to inform animal care professionals and policymakers. Starting in her first academic position and throughout her career, Janice assumed leadership roles, first as professor, interim department head and Director of the International Meat and Livestock Institute at Kansas State University, and later as professor, department chair, and Director of Animal Welfare at Michigan State University. She is selfless with her time and energy and will be the first to volunteer her expertise when needed. In addition to providing expertise in animal welfare to agricultural organizations and food industries, Janice served on numerous scientific advisory boards for organizations such as zoos, lab animal and governmental agencies. Through her various positions and roles, she has had a significant influence on commercial and private industry, successfully bridging the gap between science-based evidence and practical needs of farm systems. She is sought out for her expertise, as evidenced by the 174 invited talks that she has given at industry meetings and internationally. She has persuaded numerous large stakeholders in animal care, such as Darden Foods, McDonalds, and Cargill to include behavior and animal-based measures into their welfare standards, thus having immeasurable effects on animal welfare for millions of lives worldwide. She currently serves as the chair of the scientific animal welfare advisory committee for United Egg Producers, comprising over 90% of the US egg industry. Janice has also made major contributions to scientific societies and journals, including serving the International Society for Applied Ethology for over 15 years- first as US Regional Secretary, then as Secretary, and finally, as President of the ISAE (1994-2011).

On top of her impressive scientific and industry contributions, Janice introduced and inspired thousands of students to the fields of applied ethology and animal welfare science. Throughout her academic career she has taught courses in applied animal behavior, animal welfare, and ethics to agriculture and veterinary students, thereby exposing many students to a field they may not have considered and a new appreciation for the science of ethology. She has received several teaching awards, including from the United States Department of Agriculture and the National Association of Colleges and Teachers in Agriculture in recognition for her scholarly teaching excellence. In addition, she has mentored graduate students and post-docs to much success, having helped advise them into and through academic positions, continuing her legacy and contributions to the field of ethology. The American Veterinary Medical Association awarded Janice the 2024 Humane Award for her work in the field of applied animal behavior and welfare, recognizing the positive influence she's had on animal lives through her career. She was immensely honored to receive this award but when we mentioned we wanted to nominate her for the ISAE Honorary Fellowship award, she was humbled and said that this would be the greatest honor as the ISAE is her home society and its mission mirrors her career focus.

**Jacquelyn Jacobs, Marisa Erasmus, and Tina Widowski /**  
*Nominators for ISAE Honorary Fellow for Janice Swanson*

## ISAE Creativity Award

### Prof. Marina (Nina) von Keyserlingk

Professor, Applied Biology (Animal Welfare Program)  
Director, UBC Dairy Education and Research Centre  
The University of British Columbia  
NSERC Industrial Research Chair in Dairy Cattle Research



The recipient of the 2024 ISAE Creativity Award was Professor Nina von Keyserlingk. She was nominated by Dr. Kathryn Proudfoot and supported by Drs. Maria José Hötzel and David Kelton. Dr. von Keyserlingk has profoundly impacted the fields of applied ethology and animal welfare, redefining our understanding of dairy cattle behavior and fostering innovations that resonate with societal values.

Over the last two decades of her career, Dr. von Keyserlingk has authored over 330 peer-reviewed publications, garnering more than 30,000 citations and achieving a Google Scholar h-index of 99. Her pioneering work seamlessly integrates applied ethology, animal welfare science, and social science, addressing pressing issues in animal agriculture such as health challenges, lameness, and early cow-calf separation. By blending scientific rigor with practical solutions, she has empowered farmers, veterinarians, and policymakers to adopt sustainable, welfare-oriented practices.

Dr. von Keyserlingk's creativity shines through her innovative research, supported by consecutive Natural Sciences and Engineering Research Council of Canada (NSERC) Discovery grants. Her groundbreaking studies have explored topics from the feeding of dairy cattle to personality traits, mood, and resilience. These insights have reshaped animal care standards and informed welfare guidelines globally.

A dynamic communicator and mentor, Dr. von Keyserlingk has delivered over 15 talks annually, reaching thousands of individuals across diverse audiences, including farmers, professionals, scientists, and students. Her ability to inspire, challenge norms, and motivate meaningful change cements her reputation as a global leader in applied ethology.

We extend our heartfelt congratulations to Dr. von Keyserlingk for this well-deserved honor and for her unwavering commitment to advancing animal welfare through creativity and collaboration.

More information about Professor Nina von Keyserlingk can be found [here](#).

### Selected relevant publications:

1. von Keyserlingk, M.A.G., and D.M. Weary. 2010. Feeding behaviour of dairy cattle: measure and applications. *Canadian Journal of Animal Science* 90 (3):303-309 <https://doi.org/10.4141/CJAS09127>
2. Proudfoot, K.L., D.M. Weary, and M.A.G. von Keyserlingk. 2012. Linking the social environment to illness in farm animals. *Applied Animal Behaviour Science* 138: 203-215 <https://doi.org/10.1016/j.applanim.2012.02.008>



3. von Keyserlingk, M.A.G., and M.J. Hötzel. 2015. The ticking clock: Addressing farm animal welfare in emerging countries. *Journal of Agricultural Environment and Ethics* 28: 179–195 <https://doi.org/10.1007/s10806-014-9518-7>
4. von Keyserlingk, M.A.G., Cestari, A.A., Franks, B., Fregonesi, J.A. and D.M. Weary. 2017. Dairy cows value access to pasture as highly as fresh feed. *Scientific Reports*. 7: 44953. <https://doi.org/10.1038/srep44953>
5. Lecorps, B., D.M. Weary and M.A.G. von Keyserlingk. 2021. Captivity induced depression in animals. *Trends in Cognitive Science* 25, No. 7 539-541 <https://doi.org/10.1016/j.tics.2021.03.010>

## New Investigator Award

### Dr. Sarah Adcock

Assistant Professor, Department of Animal and Dairy Sciences  
University of Wisconsin Madison

The recipient of the 2024 New Investigator Award was Dr. Sarah Adcock. She was nominated by her former advisor, Dr. Cassandra Tucker, who places her in the top 1% of graduate students she has mentored. She was unanimously selected for this award by the ISAE Award Committee.



Dr. Adcock demonstrates excellence as an applied ethologist and early career leader with 20 peer-reviewed publications, 70% as first or corresponding author, and \$2.4 million USD supporting her research program at UW-Madison. Dr. Adcock’s groundbreaking research spans two major themes. Her work on pain in livestock has redefined understanding of procedures such as cautery disbudding in dairy calves and tail docking and mastitis in sheep. Using innovative technologies like real-time tracking, she has uncovered subtle behavioral changes associated with pain in sheep, paving the way for more humane animal husbandry practices.

In addition, Dr. Adcock is leading cutting-edge research in the emerging field of insect farming for food and feed. She directs a USDA-funded interdisciplinary project studying black soldier fly larvae, a sustainable alternative protein source. Collaborating with industry leaders like InnovaFeed, she is advancing welfare metrics for farmed insects, ensuring the ethical development of this rapidly growing sector.

Dr. Adcock’s excellence extends beyond research. Her mentorship and teaching have inspired countless students. From receiving the UC Davis Chancellor’s Award for Mentoring Undergraduate Research in 2020 to her exceptional classroom leadership at UW-Madison, her commitment to education is unparalleled.

Dr. Adcock’s innovative and impactful work promises to shape the future of applied ethology. Please join us in congratulating her on this well-deserved recognition.

More information about Dr. Sarah Adcock can be found [here](#).

**Kaitlin Wurtz / Assistant Secretary of the ISAE (2023-2027)**

### 57<sup>th</sup> ISAE Congress – Curitiba, Brazil Report

The 57<sup>th</sup> ISAE Congress took place in the city of Curitiba, Brazil between 22<sup>nd</sup> and 26<sup>th</sup> July 2024 on the campus of Pontificia Universidade Catolica do Parana (PUCPR). The congress focussed on how the study of ethology can strengthen our relationships with various living systems in our environment. In total, 242 delegates from 38 countries attended the congress, with 214 of those joining in person and 28 online. The scientific programme was kicked off with an excellent Wood-Gush memorial lecture given by Prof. Patricia Izar from the University of São Paulo, and this was followed by three days of scientific presentations and discussion. The congress included a total of 76 oral presentations, 79 posters, 4 workshops and 5 plenaries. Curitiba was also a great venue for the social programme, allowing delegates to enjoy Brazilian hospitality, music, food and drink. This included a National Dinner in the Dona Madalena Bar and a Gala Dinner at the Ópera Arte Restaurant. A farm visit on the Friday rounded off the congress programme. I would like to thank Ruan Daros, Thiago Bernardino, Andreia De Paula Vieira, Leandro Costa and all the student helpers for their work pulling together such an excellent congress!







## 2024 Congress Travel Survey Summary

As you are probably aware, flying has a disproportionately high carbon footprint per passenger kilometre compared to the train, a coach or passenger ferry. For example, a short-haul flight produces over 34 times more CO<sub>2</sub>e per passenger km than international rail. As part of our last congress in Europe (in Tallinn, Estonia in 2024) we organised a Congress Travel Survey. This was to enable the ISAE Council to better understand the environmental impact of our congresses, and to help understand barriers to delegates adopting greener travel options (at least for our congresses in Europe where “no-fly” travel options are a possibility for many). The survey achieved a good response rate of 60% of delegates. Very few respondents (11%) chose not to fly at all. Flying was the only viable option for the 35% of delegates originating from outside Europe. For those originating in Europe, the main barrier to using the no-fly option was the time it would have taken to reach Tallinn. This is evident from the starting countries of those that chose to fly i.e. the majority could not travel to Tallinn within a day without flying, and the main reason given for why people chose to fly was the “Train/bus/ferry was an option, but the journey would have taken too much time”. Most delegates appeared to show a strong preference for travel options that get them to their destination within a day if possible. Our next congress is in the Dutch city of Utrecht and, as discussed below, this can be reached by train within a day from many European cities.



## 58<sup>th</sup> Congress – Utrecht, The Netherlands



Welcome to Utrecht for ISAE 2025!

We hope to welcome many of you to the beautiful city of Utrecht, The Netherlands from 4 to 8 August 2025! Preparations for the congress are in full swing and all information can be found through the congress website: <https://isae2025utrecht.nl/>

We have a very exciting line up of plenary speakers: the Wood-Gush Memorial lecture will be given by **Dr. Meghan Barrett** from Indiana University in the USA. She will speak on the welfare of farmed insects. **Dr. Sarah Adcock** from the University of Wisconsin-Madison, winner of the ISAE Young Investigator Award 2024, will speak about mutilation practices in farmed animals. **Dr. Leopoldo Stuardo** from WOAHA will speak on global perspectives in animal welfare in a session jointly organized with UFAW. **Dr. Claudia Vinke** from Utrecht University will introduce us to the exciting world of clinical ethology in companion animals. Finally, last but not least, **Dr. Christian Nawroth** will speak about his fascinating research on animal cognition.

And there is more! On 4 August, the European COST Action LIFT will organize a satellite workshop on positive animal welfare, that allows all ISAE delegates to register and attend. During this workshop, the **latest conceptual research in the field of positive animal welfare**, currently being carried by members of the **COST Action 'LIFTing farm animal lives'**, will be interactively presented and discussed. The workshop will be divided into three themes covering definitions of key concepts (e.g. the timescale of positive states), methodologies (e.g. assessment and indicators) and on-farm applications (i.e., a catalogue for positive animal welfare assessment). Leaders of each topic will shortly present their latest findings and remaining questions, and these questions will be addressed in smaller groups.

So, submit your abstracts now through: <https://isae2025.exordo.com/login>. **The deadline for submissions is 15 February 2025!** There are opportunities for oral presentations, poster presentations and workshops. The poster presentations will include short poster pitches again and there will be a longer poster session to interact with all those interested in your poster! For the workshops, we have already received several excellent proposals but there is room for a few more!  
Looking forward to meet many of you in Utrecht in 2025!

**Bas Rodenburg** / Chair of the Organising Committee  
**Liesbeth Bolhuis** / Chair of the Scientific Committee

Utrecht's train station is well connected to the European train network, and travel by train to Utrecht **within a day** is possible from many European cities. Utrecht University have produced a very useful guide to travelling to and from Utrecht by train ([www.uu.nl/sites/default/files/trainzonemap-en-v2.pdf](http://www.uu.nl/sites/default/files/trainzonemap-en-v2.pdf)). I encourage our European members who are planning to attend our 2025 congress in person to consider taking the train instead of a plane. For those travelling from outside Europe, you can probably reduce your carbon footprint by choosing an international flight that arrives in Europe as close as possible to Utrecht. The best option here is Amsterdam Schiphol (AMS) airport. There are up to four trains an hour from Schiphol to Utrecht and the journey takes just 30 minutes. Otherwise, Frankfurt airport (FRA) is just over 3 hours by train from Utrecht, and the train from Paris Charles de Gaulle (CDG) airport to Utrecht takes about 4 hours.

### Future Congresses – 2026 and beyond

We are planning to hold the 2026 Congress in New Delhi, India, and further details will be announced in due course. We usually alternate our annual congresses between Europe and outside Europe, and following this pattern we are due to meet in Europe in 2027 and outside Europe in 2028, but we can be flexible if needed. We don't yet have any firm offers to host any ISAE international congresses after 2026, so if you might be interested, please email Mark Rutter the ISAE Senior Vice President ([smrutter@harper-adams.ac.uk](mailto:smrutter@harper-adams.ac.uk)). If you have already contacted Mark, please try again, as your original email might have gone to the spam folder.

### Congress Attendance Fund (CAF)

We will be piloting a different approach for applying to the ISAE CAF in 2025. Rather than email your applications to the Senior Vice President, there will be a Microsoft Forms application to complete. We aim to launch this by mid-January 2025 with a deadline of 15 February 2025, so please keep an eye on the ISAE 2025 Utrecht congress website (<https://isae2025utrecht.nl/>) for further details.

*Mark Rutter / Senior Vice President of the ISAE (2023-2025)*

## EDIA Committee Update

ISAE EDIA Conference Allies were in place again this year for the wonderful event in Brazil this year. Looking back, this was our most successful conference with little to no need for direct contact with Allies from conference delegates. We aim to continue with this initiative at future events. If you are interested in becoming an ally or would like to provide any feedback please contact [isaeedicommittee@gmail.com](mailto:isaeedicommittee@gmail.com). Your ISAE EDIA Committee continues to work on establishing a mentor framework, aligning this activity with the Development Officers and their work with the Developing Countries Congress Attendance Fund. The work is taking longer than anticipated so our original deadline for a framework has been extended.

In December, a number of religious festivals are celebrated including:

- Kwanzaa which is a week-long celebration honoring African heritage and culture,
- Advent and Christmas when Christians commemorate the birth of Jesus Christ,
- Solstice celebrated by Pagan and Wicca believers through Yule,
- Rohatsu celebrating the Buddha's decision to sit under the Bodhi tree until he reached spiritual enlightenment,
- Hanukkah, an eight-day Jewish festival of lights.

In the world of academia, we should also look forward to well-deserved break. So on behalf of the EDIA Committee we wish you a restful time and encourage you to be kind to yourself so you are refreshed and ready for the new year.

*Linda Greening / Chair of ISAE EDI Committee (2021-2027)*

## Regional News and Development

### Development

#### Thanks to Maria

The ISAE Development Office team sincerely appreciates Dr. Maria Camilla Ceballos, the former Development Officer, for doing a fantastic and exceptional job in the last four years (2020-2024) as the ISAE's Development Officer. We acknowledge and appreciate Maria's effort in securing an Open Philanthropy grant for ISAE Development Office to bring the science of farm animal welfare to developing countries for the next three years. Thank you very much, Maria!



Photo of Dr. Maria Camilla Ceballos

### ISAE DCCAF 2024

The 6<sup>th</sup> DCCAF program held at the 57<sup>th</sup> Congress of the International Society for Applied Ethology in Curitiba, Brazil, was a great success. The 14 DCCAF awardees from Brazil, Benin, Colombia, India, Nepal, Nigeria, Pakistan, Panama, Turkey, and Vietnam were all present in person at the congress.

The DCCAF program included the pre-congress workshop, congress social activities, and farm visits. The pre-congress workshop had diverse topics, including introduction to animal welfare (by Dr. Joao Costa), understanding applied animal behavior science and its relevance to animal welfare (by Dr. Aline Sant'Anna), the use of precision livestock farming techniques in the improvement of animal welfare (by Dr. Bas Rodenburg), how to create awareness about animal welfare in developing countries (by Dr. Oluwaseun Serah Iyasere) and how animal welfare supports Feed the Future goals and USAID's developing countries funding opportunities (by Dr. Emma Bratton).



The DCCAF group also visited the Pontificia Universidade Catolica do Parana (PUCPR) farm to learn about the best animal welfare practices.



Photos from ISAE DCCAF 2024

## New Development Officer

At the ISAE Congress in Curitiba, Brazil, a new Development Officer, Dr. Iyasere, Oluwaseun Serah, was elected. Dr. Iyasere was a recipient of DCCAF in 2019. Dr. Iyasere got her first and second degrees with first-class honors from the Federal University of Agriculture, Abeokuta, Nigeria. She obtained her PhD from the University of Newcastle, Newcastle upon Tyne, United Kingdom, in 2014. In 2021, Dr. Iyasere received the highly competitive Georg Forster Research Fellowship for Experienced Researchers from the Alexander von Humboldt Foundation. She is an associate professor with interests in maternal care, bioacoustics, and cognition in farm animals. She is the author of 'Go to the Hen', a book that relates animal behaviors with issues in human lives. She is one of the founders of Animal Welfare Group Nigeria.



Photo of Dr. Iyasere

## DCCAF Alumni Network

The Development Office has launched a DCCAF Alumni network on Telegram. This alumni group aims to bring together all the DCCAF awardees since its inception and foster networking and collaboration among members.

**Oluwaseun Serah Iyasere / Development Officer of the ISAE (2024-2028)**  
**Samuel Durosaro / Assistant Development Officer of the ISAE (2024-2025)**

## Benelux

On the 5th of December, the regional ISAE Benelux meeting of 2024 was organised at the Epic Alpaca Farm in Belgium.

The day started with a keynote talk about 'applying learning theory when doing research on captive animals' brought by Christel Moons (Ghent University). Other presentations covered a broad range of animal species and topics such as the diet of pigs, catching methods for poultry, post-work stress in dogs, calf mortality, tear staining in pigs and sniffing behaviour of horses.

The meeting also included a surprise activity, moderated by Saskia Kliphuis (Utrecht University), during which quick decision making of participants was required on difficult topics. After lunch, a tour on the alpaca farm was included.

The day was finished with a dinner in a local pizza restaurant.



**Maëva Manet and Liesbeth van Damme / Regional Secretaries for Benelux**

### **East Asia**

Thank you for participating in the annual meeting of the Japanese Society for Animal Behavior and Management (JSABM), held at Tokai University, Kumamoto, on September 12-14. The next conference has yet to be determined. Please check the society's website: <http://jsabm.org/conference/>

**Michiru Fukasawa / Regional Secretary for East Asia**

### **Oceania**

Oceania is currently looking for a co-secretary. If interested, please contact Danila Marini.

**Danila Marini / Regional Secretary for Oceania**

### **South and Central Asia**

#### **ISAE India Workshop**

The 3<sup>rd</sup> Indian ISAE Workshop with the theme 'Natural behaviors in relation to production and welfare of native farm animals' organized by the country liaison, Dr. Vijah Singh Pal, in conjunction with ICAR - National Dairy Research Institute, Karnal, Haryana, India, was held on October 25, 2024. The workshop had one inaugural session, two technical sessions, and a panel discussion. In the first technical session, there were six presentations that focused on harnessing natural behaviors of livestock for improving productivity and welfare. The second session focused on welfare assessment and strategies for mitigating welfare problems in native livestock with six presentations. The theme of the panel discussion was "initiatives/strategies for mainstreaming livestock welfare into local production systems." The panelists included scientists, extension specialists, and dairy farmers.



The workshop saw an overwhelming response, with 130 registrations. Among those who had registered, 102 participants attended the workshop physically, and 25 participants attended virtually. Out of 102 participants who attended physically, 71 were males, and 31 were females. Among those who attended were 31 scientists/faculty in universities and research institutes, 59 postgraduate and doctoral students, 11 farmers, and one animal welfare consultant.



Panel discussion on initiatives/strategies for mainstreaming livestock welfare into local production systems. The panelists included five Scientists, one Livestock Extension specialist, one Field veterinarian and three progressive dairy farmers

Photos from India workshop

## ISAE Bangladesh Workshop

The 5<sup>th</sup> Animal Welfare Workshop in Bangladesh was held on the 27<sup>th</sup> of November, 2024, at the Conference Room, Teacher-Student Center, Patuakhali Science & Technology University (Main Campus). The theme of the workshop was 'Using the knowledge of animal behaviour to improve animal welfare and food safety'. 92 participants attended the event in person.

Scientific talks of the workshop were divided into two technical sessions, designed to disseminate basic scientific knowledge of animal behaviour and welfare to all participants. The first technical session included three talks on cattle behavior and welfare; wildlife, zoo and aquatic animal conservation and welfare; and pet animal behavior and welfare. The second technical session included four talks on welfare challenges in marketing, transportation, and slaughtering of cattle in Bangladesh; laboratory animal behaviour and welfare; poultry behaviour and welfare; and applied technologies to assess animal behaviour.

During the extended house discussion session, relevant speakers answered questions from the participants. There was also a discussion with the country liaison of ISAE in Bangladesh, Dr. Jashim Uddin, and a brief talk by each invited guest on Bangladesh's present animal welfare laws and the demonstrations of how to apply good welfare practices.



Photos from Bangladesh workshop

**Vijay Pal Singh and Sumita Sugnaseelan** / *Regional Secretaries for South and Central Asia*  
**Jashim Uddin** / *Country Liaison of Bangladesh*

## Southwest Europe

Having spent many years in the position, it is time that Emma and Daniela hand over the reins of regional secretary duties to new members. Dr. Anna Olsson and Dr. Matteo Chincarini have been elected to serve as the regional co-secretaries for the South West Europe Region and the overall ISAE Council supported their election to this post. We look forward to welcoming them into this role and look forward to a new page for the South West Europe region under their leadership as regional secretaries.

The 2nd regional meeting was run in Porto the 12<sup>th</sup> of July 2024. Around 25 people attended the meeting, and it was held as satellite for the UFAW meeting in Porto. The program can be found [here](#).

**Emma Fàbrega and Daniela Alberghina** / *Regional Secretaries for Southwest Europe*



## UK and Ireland

The regional meeting will be held on Wednesday 2 April 2025 in Cork, Ireland. Further details will follow soon on deadlines for abstract submissions, registration details and accommodation options.

**Keelin O'Driscoll and Ellen Williams** / *Regional Secretaries for Canada*

## USA and Canada

The 15th North American Regional ISAE Meeting will be held on May 14 and 15, 2025 in the Arboretum Centre at the University of Guelph in Ontario. Abstract submissions open on Monday, January 20, 2025, and submissions will close on February 10, 2025. Abstracts will be peer reviewed and selected by February 28, 2025. Details will be shared about an abstract portal link, registration costs, and deadlines as they become available.

**Blair Downey and Allison Pullin** / *Regional Secretaries for USA*  
**Clover Bench and Meagan King** / *Regional Secretaries for Canada*

## Other News

### Animal Welfare Judging and Assessment Contest

The American Veterinary Medical Association (AVMA) held its annual Animal Welfare Assessment Contest (AWJAC) in November 2024. There were a record 270 participants across 27 universities. The species assessed included lactating dairy cows, laboratory frogs (*Xenopus laevis*), African penguins in a zoo, and dogs in a commercial breeding facility.

To see the list of winners, visit the [AWJAC press release](#).

To learn more about the Animal Welfare Assessment Contest and for information on upcoming contests, including the Spring virtual contest, visit [AWJAC.org](#).

**Carly O'Malley** / *Secretary of the ISAE (2021-2025)*

### AAALAC Update

ISAE continues to support the mission and work of AAALAC International by serving as an AAALAC "Member Organization." ISAE was recently represented at AAALAC's annual meeting in September along with 70+ other prestigious scientific, professional and educational groups from around the world that have an interest in advancing animal well-being in science.

AAALAC International is the world's largest accrediting body for animal research and education programs. Currently more than 1,130 companies, universities, hospitals, government agencies and other research institutions in 50 countries/regions have earned AAALAC accreditation, demonstrating their commitment to responsible animal care and use. These institutions volunteer to participate in AAALAC's program, in addition to complying with all applicable local and national laws that regulate animal research. Those that meet or exceed applicable standards are awarded accreditation—a mark of quality assurance recognized around the world.

ISAE's continued participation as an AAALAC International Member Organization demonstrates our commitment to responsible animal care and use. As AAALAC continues to work on its 5-year plan, ISAE's Member Organization Delegate (Brianna Gaskill), has been working diligently as part of a subcommittee to help update AAALAC's FAQ on Scientific Reproducibility as well as generate a new statement on 3Rs programs. The hope is that this FAQ will help drive development of more strategic 3Rs initiatives at AAALAC accredited institutions. The FAQ has already been commented on by the public and we hope it will be released in early 2025.

**Brianna Gaskill / AAALAC Membership Organization Delegate**

## Employment and Education Opportunities

Some current [employment and education opportunities](#) related to applied ethology include:

- Junior scientist position on Behavioural study of maternal-youngs relationships in pigs, France (deadline March 4<sup>th</sup> 2025)
- PhD on overcoming human barriers to uptake of condition scoring in the beef industry, UK (deadline January 31<sup>st</sup> 2025)
- Research Associate in the field of Animal Husbandry, Behaviour and Welfare, Germany (deadline January 7<sup>th</sup> 2025)
- Researcher in Poultry and Rabbit welfare, IRTA, Spain (deadline January 6<sup>th</sup> 2025)
- Research manager in farm animal welfare, USA

For details on how to apply and for the most up-to-date information on employment and education opportunities, visit the [ISAE website](#) and follow us on social media:

- **Facebook:** [www.facebook.com/appliedethology](http://www.facebook.com/appliedethology)
- **Twitter:** [@appliedethology](https://twitter.com/appliedethology)

To advertise a position: send the job title, location, contact email address, application deadline, and a URL and/or a pdf flyer to [info@applied-ethology.org](mailto:info@applied-ethology.org). Listings are updated biweekly and will be removed 3 months after the posting date if no closing date is given.

## Contact Information

### Council Members

<b>President</b>	<b>Janice Siegford</b>	<a href="mailto:siegford@msu.edu">siegford@msu.edu</a>
<b>Senior Vice-President</b>	<b>Mark Rutter</b>	<a href="mailto:smrutter@harper-adams.ac.uk">smrutter@harper-adams.ac.uk</a>
<b>Junior Vice-President</b>	<b>Maria José Hötzel</b>	<a href="mailto:maria.j.hotzel@ufsc.br">maria.j.hotzel@ufsc.br</a>
<b>Secretary</b>	<b>Carly O'Malley</b>	<a href="mailto:comalley15@gmail.com">comalley15@gmail.com</a>
<b>Assistant Secretary</b>	<b>Kaitlin Wurtz</b>	<a href="mailto:wurtzkai@gmail.com">wurtzkai@gmail.com</a>
<b>Membership Secretary</b>	<b>Abdelkareem Abdallah</b>	<a href="mailto:isaemembership@applied-ethology.org">isaemembership@applied-ethology.org</a>
<b>Development Officer</b>	<b>Oluwaseun Serah Iyasere</b>	<a href="mailto:isaedevelopment@outlook.com">isaedevelopment@outlook.com</a>
<b>Assistant Development Officer</b>	<b>Samuel Durosaro</b>	<a href="mailto:durosaroso@funaab.edu.ng">durosaroso@funaab.edu.ng</a>
<b>Treasurer</b>	<b>Emma Baxter</b>	<a href="mailto:ISAE_treasurer@outlook.com">ISAE_treasurer@outlook.com</a>
<b>Assistant for Treasurer</b>	<b>Lucy Oldman</b>	<a href="mailto:Lucyoldham@sruc.ac.uk">Lucyoldham@sruc.ac.uk</a>
<b>Communications Officer</b>	<b>Ophélie Menant</b>	<a href="mailto:info@applied-ethology.org">info@applied-ethology.org</a>
<b>Assistant Communications Officer</b>	<b>Maria V. Rørvang</b>	<a href="mailto:mariav.rorvang@slu.se">mariav.rorvang@slu.se</a>
<b>Senior Editor</b>	<b>Kris Descovich</b>	<a href="mailto:k.descovich1@uq.edu.au">k.descovich1@uq.edu.au</a>
<b>Junior Editor</b>	<b>Peta Taylor</b>	<a href="mailto:peta.taylor@unimelb.edu.au">peta.taylor@unimelb.edu.au</a>
<b>Procedural Advisor</b>	<b>Suzanne Millman</b>	<a href="mailto:smillman@iastate.edu">smillman@iastate.edu</a>
<b>Ethics Officer</b>	<b>Fernandy (Faye) Tahamtani</b>	<a href="mailto:fmt@animalia.no">fmt@animalia.no</a>
<b>EDIA Officer</b>	<b>Linda Greening</b>	<a href="mailto:linda.greening@hartpury.ac.uk">linda.greening@hartpury.ac.uk</a>

## Regional Secretaries and Student Representatives

<b>Africa &amp; West Asia</b>	<b>Oluwaseun Christianah Ojelade</b>	<a href="mailto:ojeladeoc@funaab.edu.ng">ojeladeoc@funaab.edu.ng</a>
<b>Benelux</b>	<b>Maëva Manet</b>	<a href="mailto:m.w.e.manet@uu.nl">m.w.e.manet@uu.nl</a>
	<b>Liesbeth van Damme</b>	<a href="mailto:Liesbeth.VanDamme@ilvo.vlaanderen.be">Liesbeth.VanDamme@ilvo.vlaanderen.be</a>
<b>Canada</b>	<b>Meagan King</b>	<a href="mailto:Meagan.King@umanitoba.ca">Meagan.King@umanitoba.ca</a>
	<b>Clover Bench</b>	<a href="mailto:clover.bench@ualberta.ca">clover.bench@ualberta.ca</a>
<b>East Asia</b>	<b>Michiru Fukasawa</b>	<a href="mailto:michiru.fukasawa.b4@tohoku.ac.jp">michiru.fukasawa.b4@tohoku.ac.jp</a>
<b>East &amp; South Europe</b>	<b>Radka Šárová</b>	<a href="mailto:sarova.radka@gmail.com">sarova.radka@gmail.com</a>
<b>Latin America</b>	<b>Thiago Bernardino</b>	<a href="mailto:isae.latinoamerica@gmail.com">isae.latinoamerica@gmail.com</a>
	<b>Jaime Figueroa</b>	
<b>Nordic</b>	<b>Karen Thodberg</b>	<a href="mailto:Karen.thodberg@anivet.au.dk">Karen.thodberg@anivet.au.dk</a>
	<b>Per Peetz Nielsen</b>	<a href="mailto:per.peetz.nielsen@ri.se">per.peetz.nielsen@ri.se</a>
<b>Oceania</b>	<b>Danila Marini</b>	<a href="mailto:danila.marini@csiro.au">danila.marini@csiro.au</a>
<b>South and Central Asia</b>	<b>Vijay Pal Singh</b>	<a href="mailto:vp.singh@igib.in">vp.singh@igib.in</a>
	<b>Sumita Sugnaseelan</b>	<a href="mailto:sumi@upm.edu.my">sumi@upm.edu.my</a>
<b>Southwest Europe</b>	<b>Matteo Chincarini</b>	email: coming soon
	<b>Anna Olsson</b>	email: coming soon
<b>UK &amp; Ireland</b>	<b>Keelin O'Driscoll</b>	<a href="mailto:keelin.odriscoll@teagasc.ie">keelin.odriscoll@teagasc.ie</a>
	<b>Ellen Williams</b>	<a href="mailto:ewilliams@harper-adams.ac.uk">ewilliams@harper-adams.ac.uk</a>
<b>USA</b>	<b>Blair Caitlin Downey</b>	<a href="mailto:bcdowney@utk.edu">bcdowney@utk.edu</a>
	<b>Allison Pullin</b>	<a href="mailto:apullin@ncsu.edu">apullin@ncsu.edu</a>
<b>West Central Europe</b>	<b>Annika Krause</b>	<a href="mailto:krause@fhn-dummerstorf.de">krause@fhn-dummerstorf.de</a>
	<b>Katharina Zipp</b>	<a href="mailto:zipp@uni-kassel.de">zipp@uni-kassel.de</a>
<b>Student Representatives</b>	<b>Bianca Vandresen</b>	<a href="mailto:bvandres@student.ubc.ca">bvandres@student.ubc.ca</a>
	<b>Mostafa Farghal</b>	<a href="mailto:mostafa.farghal@ucalgary.ca">mostafa.farghal@ucalgary.ca</a>